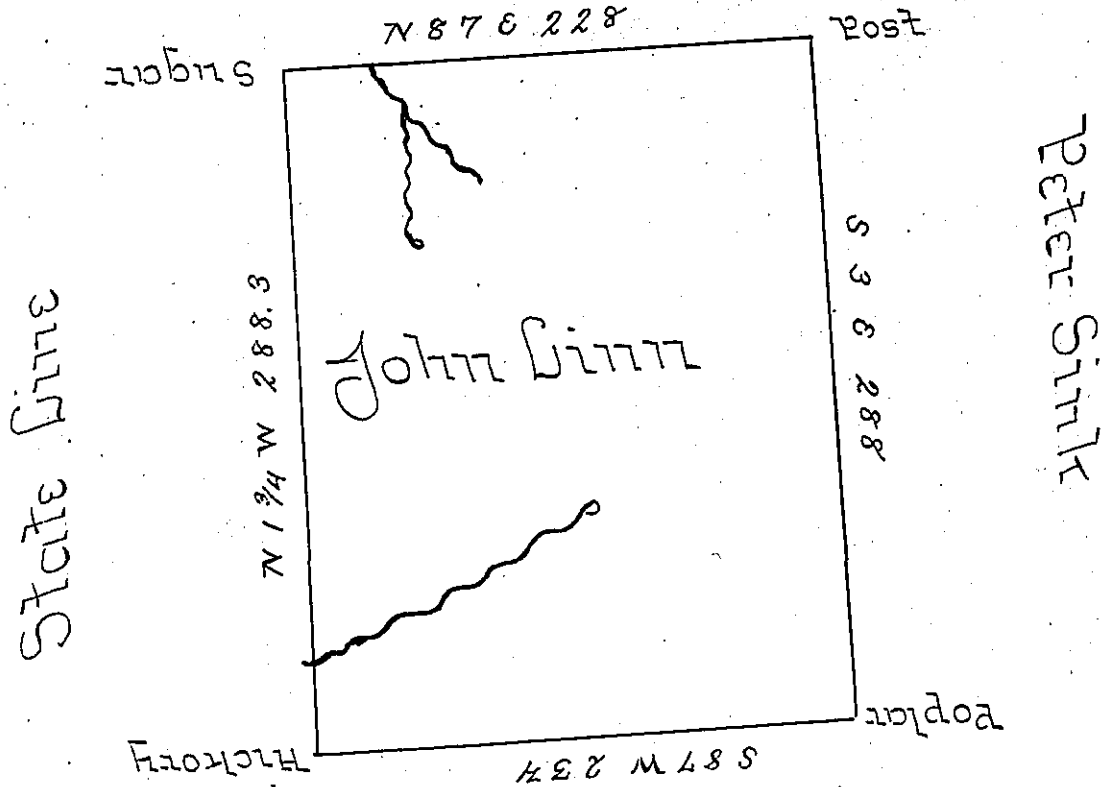


Paul Metz



Samuel Linn

Situate on the Waters of big Beaver Creek in district No 3 Allegany County containing three hundred and ninety two Acres, sixty eight perches and the Allowance, Surveyed June 1796 in pursuance of a Warrant granted John Linn 21 April 1794

Ben Stokely D.S.

Van Brodhead Esq. S.G.

*IN TESTIMONY* that the above is a copy of the original remaining on file in the Department of Internal Affairs of Pennsylvania, made conformably to an Act of Assembly approved the 16th day of February, 1833, I have hereunto set my Hand and caused the Seal of said Department to be affixed at Harrisburg, this twentieth day of October 1905.

*Asa C. Brown*  
Secretary of Internal Affairs.